

Support our work – Memorial Benches

Thank you very much for your interest in supporting the work of the Malvern Hills Trust.



How can I help?

We're looking for individuals, families and friends who may wish to support our work to improve access for visitors by donating a memorial bench.

There are more than 360 benches scattered across the Malvern Hills and Commons landscape providing places for people to rest and take in the views.

Your donation will help us to provide benches in places where they have previously been lost or have come to the end of their life.

What will my donation be supporting?

We've got two types of benches that we'd like to provide for visitors.

Plank benches

The minimum donation for a bench is £450.

This includes:

- Purchase of bench (shown in image above)
- Delivery
- Installation
- Maintenance of the bench over its life (estimated 20-25 years).

We are currently looking for donors for 8 benches along main paths on the Malvern Hills and Commons.

A map of the locations of the benches and further information has been provided below.



Malvern Hills Trust

Please be aware that the benches are subject to availability. Should your application be received after the benches are all accounted for, we will be in touch to discuss alternative options.

The benches have been recently installed and we are looking for supporters to 'adopt' these benches.

How will my donation be recognised?

Benches – Plaques can be placed on the bench seat in memory or celebration. Plaques must be sourced externally by the donor. The maximum size for the plaque is: 12 to 24cm (length) x 5cm (height).

When your memorial bench has been confirmed, we will contact you to provide more details about the plaque and how it will be presented on the bench.

For all of the items, your name will also be recorded in our donations book which records all those who have kindly supported our work.

What do I need to do next?

If you wish to make a donation towards one of the above benches, please complete the application form below and email it to beck@malvernhills.org.uk or post to:

Malvern Hills Trust,
Manor House
Grange Road
Malvern
Worcestershire
WR14 3EY

We will then reply to your request with confirmation and further information.

Please mark on your application your preferred bench location and second choice. Unfortunately, we are unable to guarantee the location of your chosen bench due to availability. We will contact you should we need to discuss availability locations due to limited availability.

Who are we?

The Malvern Hills Trust owns, protects and manages the unique cultural heritage, wildlife and geology of his iconic English landscape for the benefit of the local community and the hundreds of thousands of visitors who come each year.

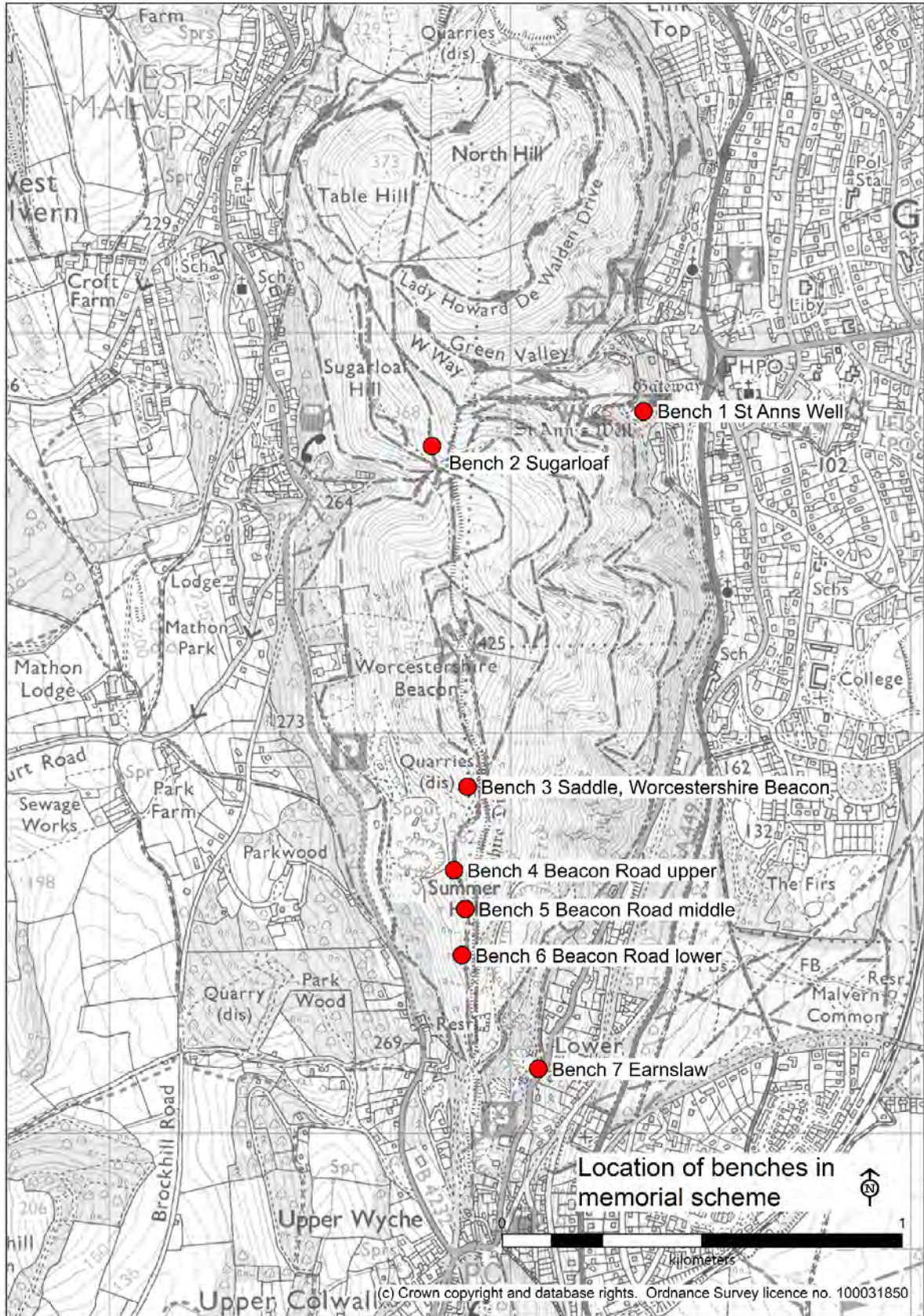
We have been caring for the Malvern Hills and surrounding commons since we were established in 1884 by an Act of Parliament, and are a registered charity.

Malvern Hills Trust is the working name of the Malvern Hills Conservators (charity number 515804).

For more information please contact the office on 01684 892002 or email info@malvernhills.org.uk



Location of benches - map



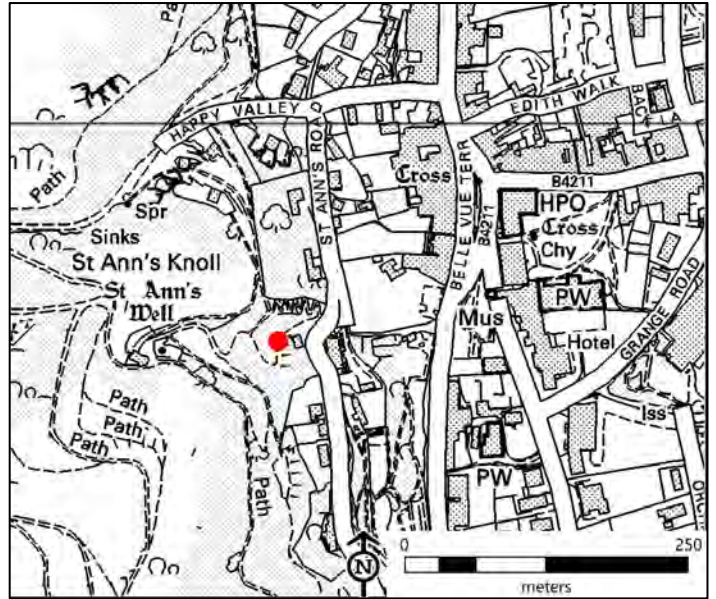


Bench 1 – St Ann’s Well

This bench provides a resting place on the route from Great Malvern to the popular St Ann’s Well.

Grid reference: SO 77338 45804

What3words: [//worry.heats.angle](https://worry.heats.angle)

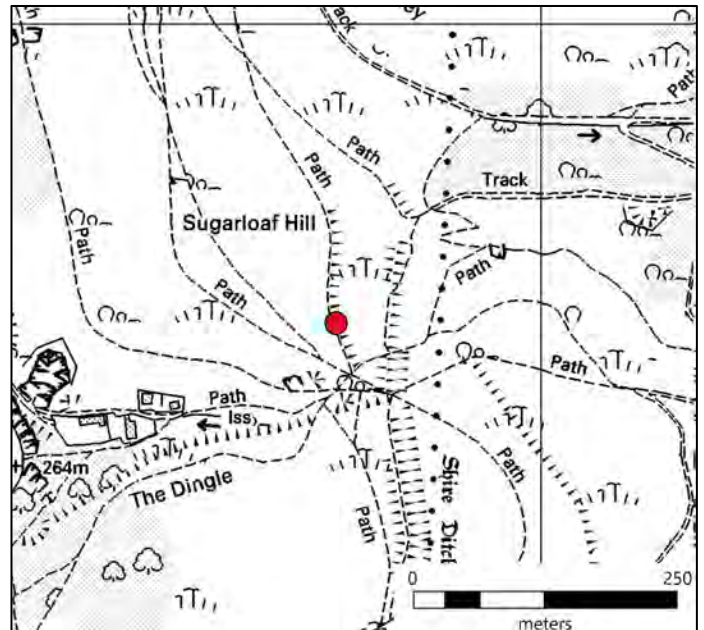


Bench 2 – Sugarloaf Hill

Along a popular path near to the Worcestershire Beacon, this bench offers somewhere to rest with views to Malvern Town.

Grid reference: SO 76809 45706

What3words: [//smallest.burglars.belonging](https://smallest.burglars.belonging)

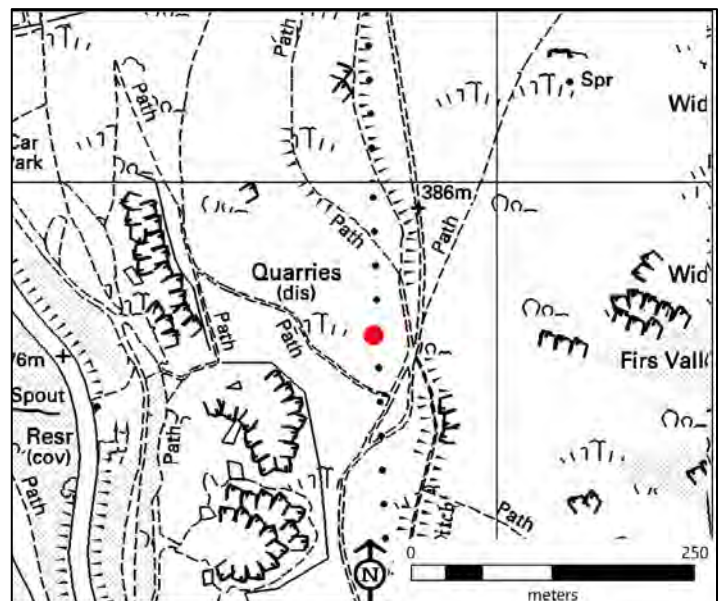


Bench 3 – Saddle, Worcestershire Beacon

With wide sweeping views across Herefordshire, this bench offers a resting place off the beaten track.

Grid reference: S076903 44853

What3words: [//rounds.growth.ample](https://rounds.growth.ample)



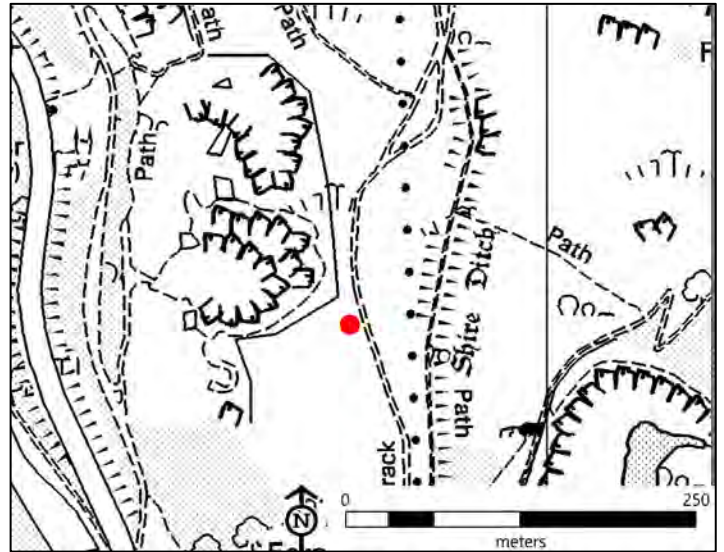


Bench 4 – Beacon Road upper

This bench offers a resting place along one of the most popular routes on the Malvern Hills up to the highest point, the Worcestershire Beacon.

Grid reference: SO 76863 44667

What3words: [//connects.gobbles.wishing](https://www.what3words.com/#!/en/000/000/000//connects.gobbles.wishing)

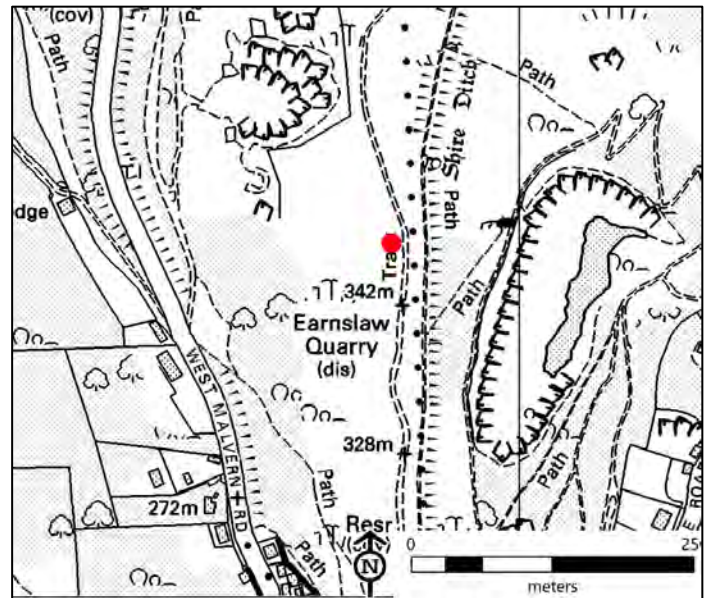


Bench 5 – Beacon Road middle

This bench offers a resting place along one of the most popular routes on the Malvern Hills up to the highest point, the Worcestershire Beacon.

Grid reference: SO 76898 44563

What3words: [//cigar.eradicate.stove](https://www.what3words.com/#!/en/000/000/000//cigar.eradicate.stove)

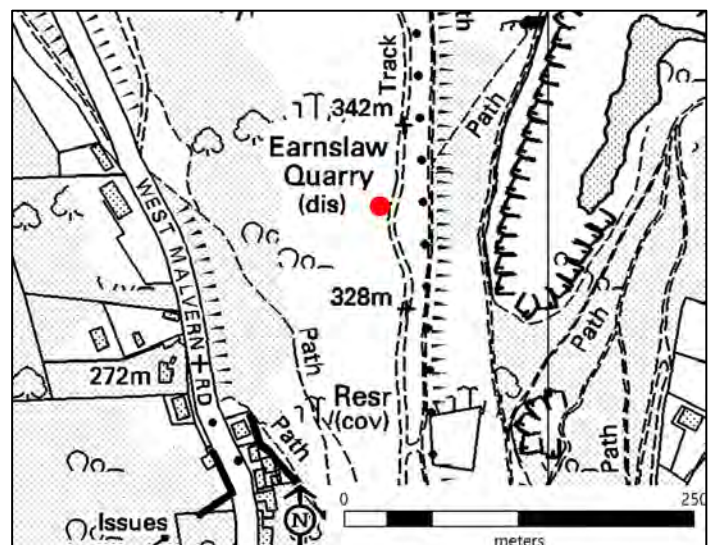


Bench 6 – Beacon Road lower

This bench offers a resting place along one of the most popular routes on the Malvern Hills up to the highest point, the Worcestershire Beacon.

Grid reference: SO 76887 44446

What3words: [//perfumed.beyond.unpacked](https://www.what3words.com/#!/en/000/000/000//perfumed.beyond.unpacked)



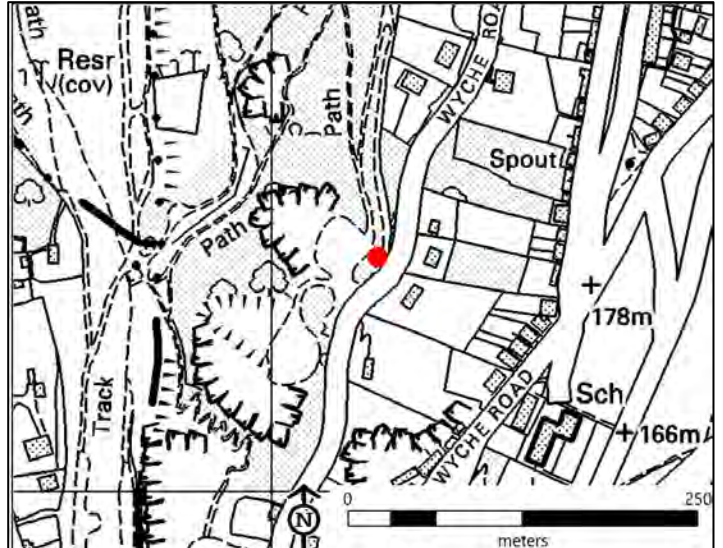


Bench 7 – Earnslaw

An easier access path starts from Earnslaw Quarry car park and this bench provides a resting point for those using this route.

Grid reference: SO 77077 44170

What3words: [//twist.adapt.chilling](https://www.what3words.com/?w3w=twist.adapt.chilling)

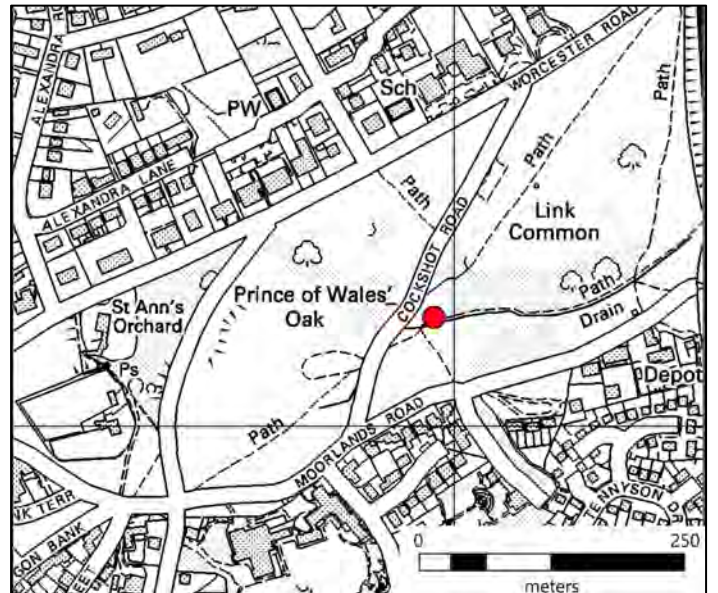


Bench 8 - Link Common

This bench offers somewhere to sit on Link Common with exceptional views up to North Hill.

Grid reference: SO 77990 47113

What3words: [//coats.armed.jumps](https://www.what3words.com/?w3w=coats.armed.jumps)



Donations for Malvern Hills benches - Application form

Please complete the application form below and return it to beck@malvern hills.org.uk or post to 'Beck Baker, Malvern Hills Trust, Manor House, Grange Road, Malvern, Worcestershire, WR14 3EY.'

Please mark on your form your preferred bench location and your second choice.

Name:			
Contact number:			
Contact email:			
Bench of choice* (please circle/mark first and second choice)	1st choice	2nd choice	Minimum donation amount
Bench 1 – St Ann’s Well			£450
Bench 2 – Sugarloaf Hill	Reserved	Reserved	£450
Bench 3 – Saddle, Worcestershire Beacon	Reserved	Reserved	£450
Bench 4 – Beacon Road upper	Reserved	Reserved	£450
Bench 5 – Beacon Road middle	Reserved	Reserved	£450
Bench 6 – Beacon Road lower			£450
Bench 7 – Earnslaw			£450
Bench 8 - Link Common			£450

*subject to availability.

We will contact you on the receipt of your application form to proceed with your donation.

Please consider completing the below Gift Aid Declaration form if you are a UK taxpayer to support us further.

Thank you for your support.



Charity Gift Aid declaration

Boost your donation by 25p of Gift Aid for every £1 you donate

Gift Aid is reclaimed by the charity from the tax you pay for the current tax year. Your address is needed to identify you as a current tax payer. In order to Gift Aid your donation you must tick the box below.

I want to Gift Aid my donation of £_____ and any donations I make in the future or have made in the past 4 years to Malvern Hills Conservators.

I am a UK taxpayer and understand if I pay less Income tax and/or Capital gains tax than the amount of the Gift Aid claimed on all my donations in that tax year it is my responsibility to pay any difference.

My details

Title _____ First name or initial(s) _____

Surname _____

Full home address _____

_____ Postcode _____

Date _____

Signature _____

Please notify the charity if you:

- *Want to cancel this declaration*
- *Change your name or home address*
- *No longer pay sufficient tax on your income and/or capital gains.*

If you pay Income Tax at the higher or additional rate and want to receive the additional tax relief due to you, you must include all your Gift Aid donations on your Self-Assessment tax return or ask HM Revenue and Customs to adjust your tax code.

Data protection

The personal information provided on this form will be securely held and is subject to the provisions of the General Data Protection Regulations. The information is confidential and will not be passed on to any other person or organisation. For further information on Malvern Hills Trust's privacy policy please see the website www.malvern hills.org.uk