

House of Lords

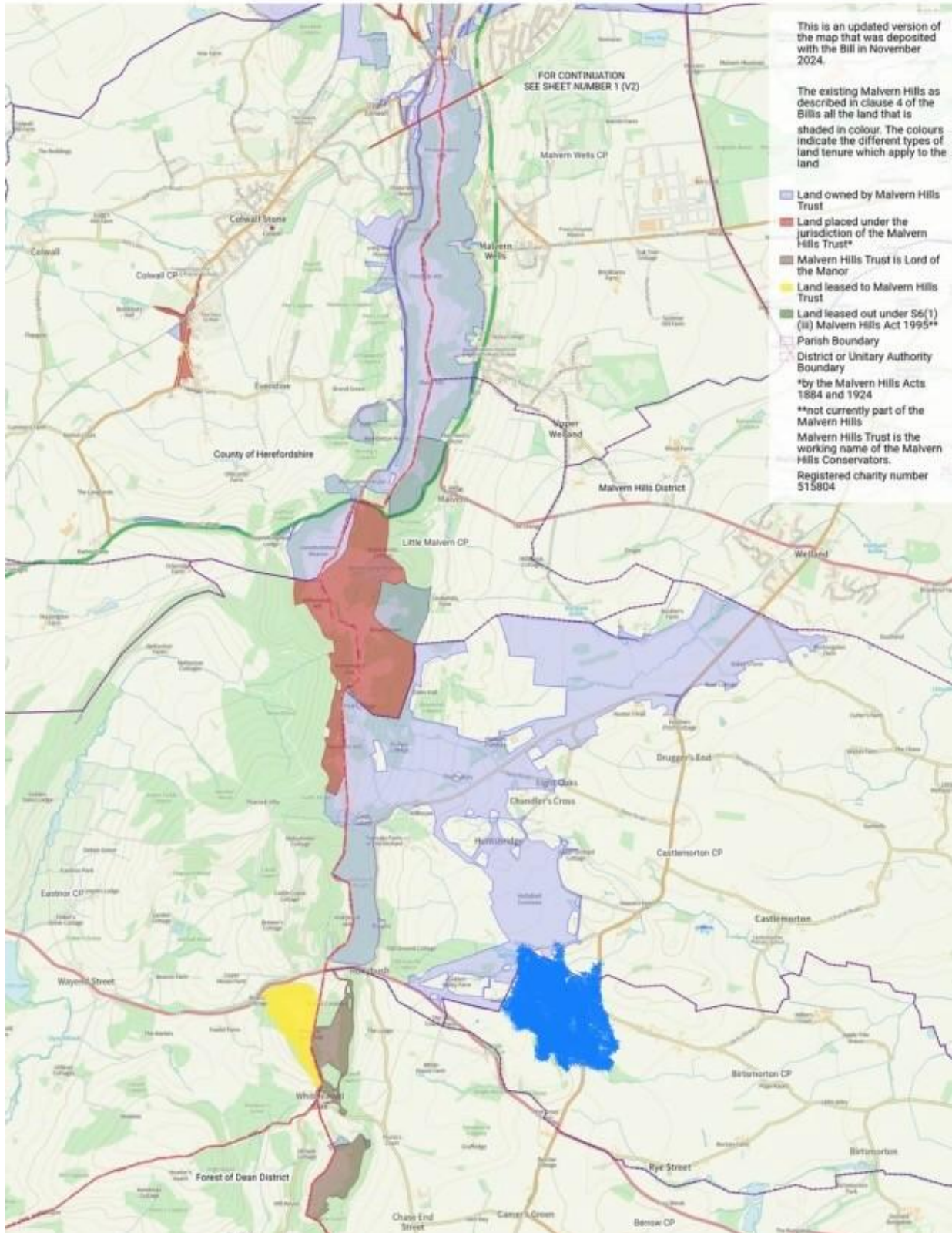
Session 2024-26

MALVERN HILLS BILL
MALVERN HILLS TRUST DOCUMENTS
BUNDLE 8

DOCUMENTS REFERRED TO BY MATTHEW GARDNER

MALVERN HILLS BILL SESSION 2024 - 2026

THE EXISTING MALVERN HILLS



1. Primarily to illustrate the contrast in terrain between the largely flat very accessible common at Castlemorton and the steeper hills behind. – Different issues requiring different tools in order to deliver grazing.



2. "Open" Entrance to Welland Village at 5.30 am Summer 2025. Left side of the picture is SSSI grazing.



3. Welland Village





4. Animals beginning to leave the common via side roads, - Grass on roadside verges can be particularly tempting to animals. If a vehicle gets behind unable to overtake, they can often be inadvertently driven considerable distances from the common by drivers.



5. sheep grazing the fragile archaeology of British Camp. – Cattle excluded using temporary fencing.



